



ELECTRONIC COPY

LG692591712
Report verification at igi.org



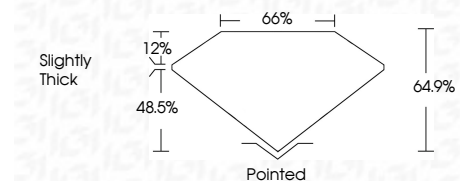
March 22, 2025
IGI Report Number **LG692591712**

Description **LABORATORY GROWN DIAMOND**
Shape and Cutting Style **CUT CORNERED
RECTANGULAR MODIFIED
BRILLIANT**

Measurements **8.03 X 5.75 X 3.73 MM**

GRADING RESULTS

Carat Weight **1.51 CARAT**
Color Grade **E**
Clarity Grade **VVS 2**



ADDITIONAL GRADING INFORMATION

Polish **EXCELLENT**
Symmetry **EXCELLENT**
Fluorescence **NONE**

Inscription(s) **IGI LG692591712**
Comments: This Laboratory Grown Diamond was created by Chemical Vapor Deposition (CVD) growth process. Type IIa



March 22, 2025
IGI Report No **LG692591712**
CUT CORNERED RECT. MODIFIED BRILLIANT
8.03 X 5.75 X 3.73 MM
Carat Weight **1.51 CARAT**
Color Grade **E**
Clarity Grade **VVS 2**
Depth **48.5%**
Table **12%**
Girdle **Slightly Thick**
Culet **Pointed**
Polish **EXCELLENT**
Symmetry **EXCELLENT**
Fluorescence **NONE**
Inscription(s) **IGI LG692591712**
Comments: This Laboratory Grown Diamond was created by Chemical Vapor Deposition (CVD) growth process. Type IIa

LABORATORY GROWN DIAMOND REPORT

March 22, 2025
IGI Report Number **LG692591712**
Description **LABORATORY GROWN DIAMOND**
Shape and Cutting Style **CUT CORNERED RECTANGULAR
MODIFIED BRILLIANT**
Measurements **8.03 X 5.75 X 3.73 MM**

GRADING RESULTS

Carat Weight **1.51 CARAT**
Color Grade **E**
Clarity Grade **VVS 2**

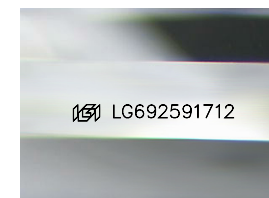
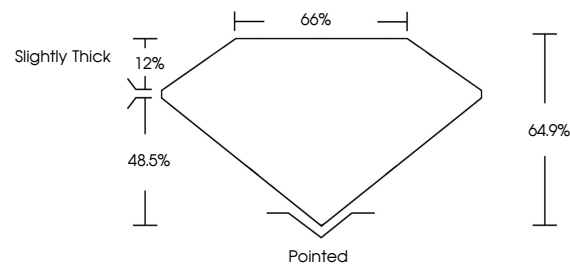
ADDITIONAL GRADING INFORMATION

Polish **EXCELLENT**
Symmetry **EXCELLENT**
Fluorescence **NONE**

Inscription(s) **IGI LG692591712**

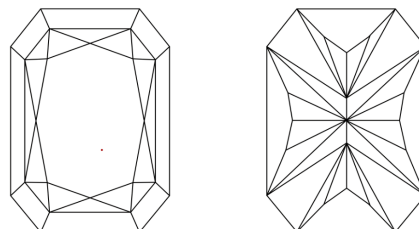
Comments: This Laboratory Grown Diamond was created by Chemical Vapor Deposition (CVD) growth process. Type IIa

PROPORTIONS



Sample Image Used

CLARITY CHARACTERISTICS



KEY TO SYMBOLS

Red symbols indicate internal characteristics.
Green symbols indicate external characteristics.

COLOR

D E F G H I J Faint Very Light Light

CLARITY

IF	VS ¹⁻²	VS ¹⁻²	SI ¹⁻²	I ¹⁻³
Internally Flawless	Very Very Slightly Included	Very Slightly Included	Slightly Included	Included

