



**ELECTRONIC COPY**

LG687583040  
Report verification at igi.org



March 5, 2025  
IGI Report Number **LG687583040**  
Description **LABORATORY GROWN DIAMOND**  
Shape and Cutting Style **ROUND BRILLIANT**  
Measurements **10.78 - 10.82 X 6.72 MM**  
**GRADING RESULTS**  
Carat Weight **4.91 CARATS**  
Color Grade **D**  
Clarity Grade **VVS 2**  
Cut Grade **EXCELLENT**

March 5, 2025  
IGI Report Number **LG687583040**  
Description **LABORATORY GROWN DIAMOND**  
Shape and Cutting Style **ROUND BRILLIANT**  
Measurements **10.78 - 10.82 X 6.72 MM**

**GRADING RESULTS**

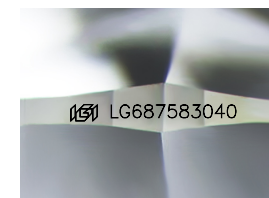
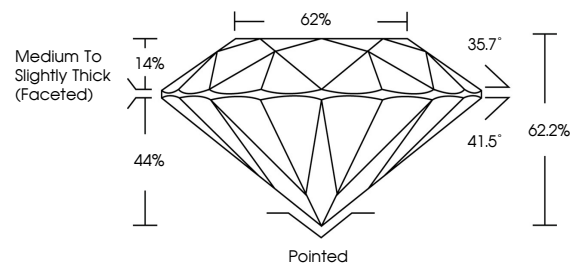
Carat Weight **4.91 CARATS**  
Color Grade **D**  
Clarity Grade **VVS 2**  
Cut Grade **EXCELLENT**

**ADDITIONAL GRADING INFORMATION**

Polish **EXCELLENT**  
Symmetry **EXCELLENT**  
Fluorescence **NONE**  
Inscription(s) **IGI LG687583040**

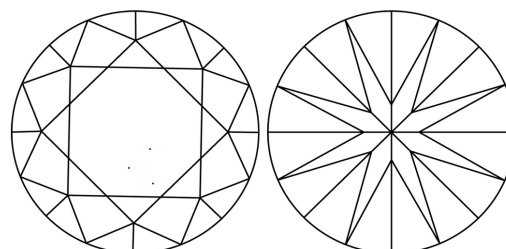
Comments: This Laboratory Grown Diamond was created by Chemical Vapor Deposition (CVD) growth process.  
Type IIa

**PROPORTIONS**



Sample Image Used

**CLARITY CHARACTERISTICS**



**KEY TO SYMBOLS**

Red symbols indicate internal characteristics.  
Green symbols indicate external characteristics.

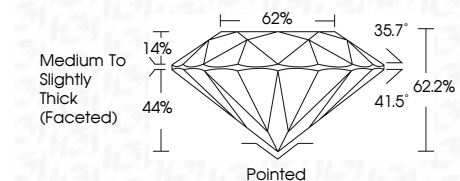
**COLOR**

D E F G H I J Faint Very Light Light

**CLARITY**

IF WS<sup>1-2</sup> VS<sup>1-2</sup> SI<sup>1-2</sup> I<sup>1-3</sup>

Internally Flawless Very Very Slightly Included Very Slightly Included Slightly Included Included



**ADDITIONAL GRADING INFORMATION**

Polish **EXCELLENT**  
Symmetry **EXCELLENT**  
Fluorescence **NONE**  
Inscription(s) **IGI LG687583040**  
Comments: This Laboratory Grown Diamond was created by Chemical Vapor Deposition (CVD) growth process.  
Type IIa



March 5, 2025  
IGI Report No. **LG687583040**  
**ROUND BRILLIANT**  
10.78 - 10.82 X 6.72 MM  
4.91 CARATS  
D  
VVS 2  
EXCELLENT  
62.2%  
62%  
Medium To Slightly Thick (Faceted)  
Pointed  
EXCELLENT  
EXCELLENT  
NONE  
IGI LG687583040  
Comments: This Laboratory Grown Diamond was created by Chemical Vapor Deposition (CVD) growth process.  
Type IIa