



ELECTRONIC COPY

LG670406827
Report verification at igi.org



December 17, 2024

IGI Report Number **LG670406827**

Description **LABORATORY GROWN DIAMOND**

Shape and Cutting Style **PRINCESS CUT**

Measurements **6.24 X 6.16 X 4.31 MM**

GRADING RESULTS

Carat Weight **1.51 CARAT**

Color Grade **E**

Clarity Grade **VS 2**

December 17, 2024

IGI Report Number **LG670406827**

Description **LABORATORY GROWN DIAMOND**

Shape and Cutting Style **PRINCESS CUT**

Measurements **6.24 X 6.16 X 4.31 MM**

GRADING RESULTS

Carat Weight **1.51 CARAT**

Color Grade **E**

Clarity Grade **VS 2**

ADDITIONAL GRADING INFORMATION

Polish **EXCELLENT**

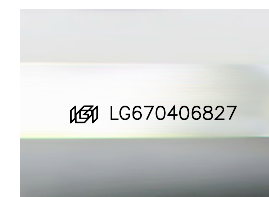
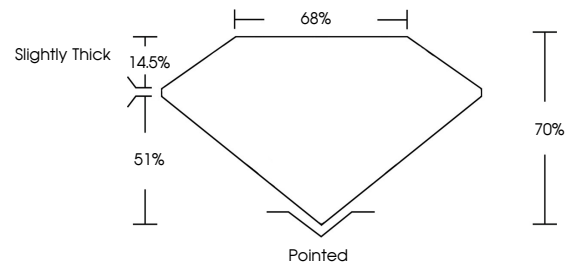
Symmetry **VERY GOOD**

Fluorescence **NONE**

Inscription(s) **IGI LG670406827**

Comments: This Laboratory Grown Diamond was created by Chemical Vapor Deposition (CVD) growth process.
Type IIa

PROPORTIONS



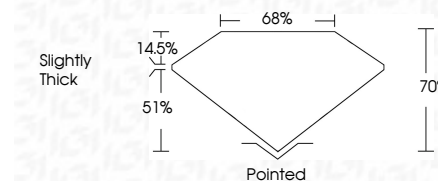
Sample Image Used

COLOR

D E F G H I J Faint Very Light Light

CLARITY

IF	VS ¹⁻²	VS ¹⁻²	SI ¹⁻²	I ¹⁻³
Internally Flawless	Very Very Slightly Included	Very Slightly Included	Slightly Included	Included



ADDITIONAL GRADING INFORMATION

Polish **EXCELLENT**

Symmetry **VERY GOOD**

Fluorescence **NONE**

Inscription(s) **IGI LG670406827**

Comments: This Laboratory Grown Diamond was created by Chemical Vapor Deposition (CVD) growth process.
Type IIa



IGI



December 17, 2024
IGI Report No LG670406827
PRINCESS CUT
6.24 X 6.16 X 4.31 MM
1.51 CARAT
Color Grade **E**
Clarity Grade **VS 2**
Table **68%**
Depth **14.5%**
Girdle **Slightly Thick**
Culet **Pointed**
Polish **EXCELLENT**
Symmetry **VERY GOOD**
Fluorescence **NONE**
Inscription(s) **IGI LG670406827**

Comments: This Laboratory Grown Diamond was created by Chemical Vapor Deposition (CVD) growth process.
Type IIa