



ELECTRONIC COPY

LG660467141
Report verification at igi.org



October 22, 2024

IGI Report Number **LG660467141**

Description **LABORATORY GROWN DIAMOND**

Shape and Cutting Style **CUSHION BRILLIANT**

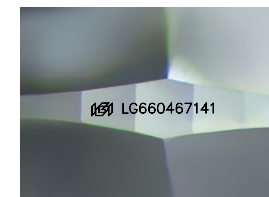
Measurements **8.10 X 6.42 X 4.30 MM**

GRADING RESULTS

Carat Weight **1.73 CARAT**

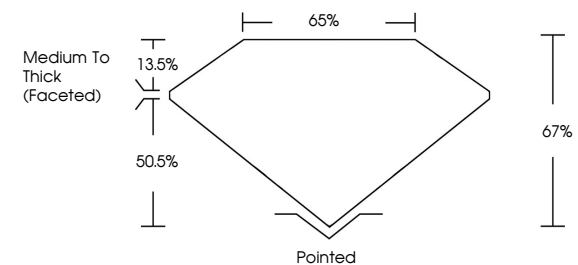
Color Grade **E**

Clarity Grade **VVS 2**

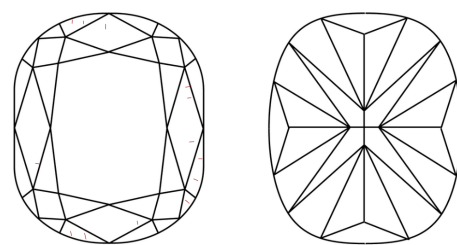


Sample Image Used

PROPORTIONS



CLARITY CHARACTERISTICS



KEY TO SYMBOLS

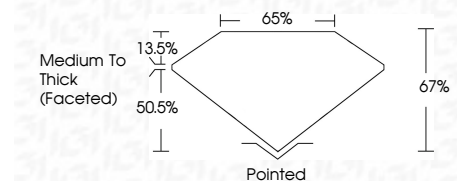
Red symbols indicate internal characteristics.
Green symbols indicate external characteristics.

COLOR

D	E	F	G	H	I	J	Faint	Very Light	Light
---	---	---	---	---	---	---	-------	------------	-------

CLARITY

IF	VS ¹⁻²	VS ¹⁻²	SI ¹⁻²	I ¹⁻³
Internally Flawless	Very Very Slightly Included	Very Slightly Included	Slightly Included	Included



ADDITIONAL GRADING INFORMATION

Polish **EXCELLENT**

Symmetry **EXCELLENT**

Fluorescence **NONE**

Inscription(s) **IGI LG660467141**

Comments: As Grown - No indication of post-growth treatment.

This Laboratory Grown Diamond was created by High Pressure High Temperature (HPHT) growth process.

Type II



IGI



October 22, 2024	IGI Report No LG660467141	CUSHION BRILLIANT	8.10 X 6.42 X 4.30 MM	1.73 CARAT	E	VVS 2	67%	65%	Medium To Thick (Faceted)	Pointed	EXCELLENT	EXCELLENT	NONE	IGI LG660467141
Shape and Cutting Style	Measurements	Carat Weight	Color Grade	Clarity Grade	Depth	Table	Grailes	Culet	Polish	Symmetry	Fluorescence	Inscription(s)	Comments: As Grown - No indication of post-growth treatment. This Laboratory Grown Diamond was created by High Pressure High Temperature (HPHT) growth process. Type II	