



ELECTRONIC COPY

LABORATORY GROWN DIAMOND REPORT

October 14, 2024  
IGI Report Number LG656487240  
Description LABORATORY GROWN DIAMOND  
Shape and Cutting Style PRINCESS CUT  
Measurements 7.89 X 7.86 X 5.49 MM

GRADING RESULTS

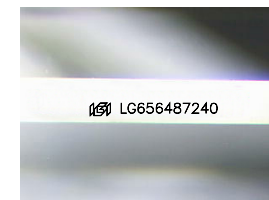
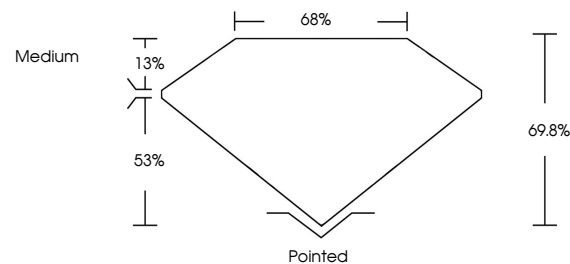
Carat Weight 3.04 CARATS  
Color Grade F  
Clarity Grade VVS 2

ADDITIONAL GRADING INFORMATION

Polish VERY GOOD  
Symmetry VERY GOOD  
Fluorescence NONE  
Inscription(s) IGI LG656487240

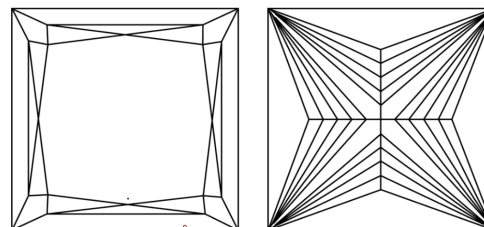
Comments: This Laboratory Grown Diamond was created by Chemical Vapor Deposition (CVD) growth process.  
Type IIa

PROPORTIONS



Sample Image Used

CLARITY CHARACTERISTICS



KEY TO SYMBOLS

Red symbols indicate internal characteristics.  
Green symbols indicate external characteristics.

COLOR

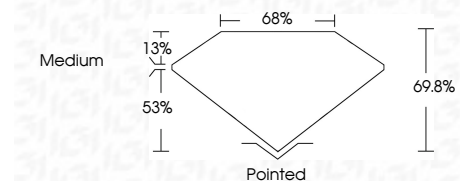
D E F G H I J Faint Very Light Light

CLARITY

IF VS 1-2 VS 1-2 SI 1-2 I 1-3  
Internally Flawless Very Very Slightly Included Very Slightly Included Slightly Included Included



October 14, 2024  
IGI Report Number LG656487240  
Description LABORATORY GROWN DIAMOND  
Shape and Cutting Style PRINCESS CUT  
Measurements 7.89 X 7.86 X 5.49 MM  
GRADING RESULTS  
Carat Weight 3.04 CARATS  
Color Grade F  
Clarity Grade VVS 2



ADDITIONAL GRADING INFORMATION

Polish VERY GOOD  
Symmetry VERY GOOD  
Fluorescence NONE  
Inscription(s) IGI LG656487240  
Comments: This Laboratory Grown Diamond was created by Chemical Vapor Deposition (CVD) growth process.  
Type IIa



IGI



October 14, 2024  
IGI Report No. LG656487240  
PRINCESS CUT  
7.89 X 7.86 X 5.49 MM  
3.04 CARATS  
F  
VVS 2  
69.8%  
53%  
Medium  
Pointed  
VERY GOOD  
VERY GOOD  
NONE  
IGI LG656487240  
Comments: This Laboratory Grown Diamond was created by Chemical Vapor Deposition (CVD) growth process.  
Type IIa