



ELECTRONIC COPY

LABORATORY GROWN DIAMOND REPORT

October 10, 2024
IGI Report Number LG655430664
Description LABORATORY GROWN DIAMOND
Shape and Cutting Style EMERALD CUT
Measurements 7.51 X 5.40 X 3.66 MM

GRADING RESULTS

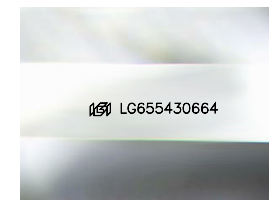
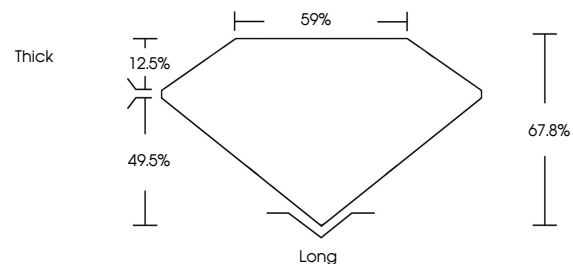
Carat Weight 1.50 CARAT
Color Grade E
Clarity Grade VS 1

ADDITIONAL GRADING INFORMATION

Polish EXCELLENT
Symmetry EXCELLENT
Fluorescence NONE
Inscription(s) IGI LG655430664

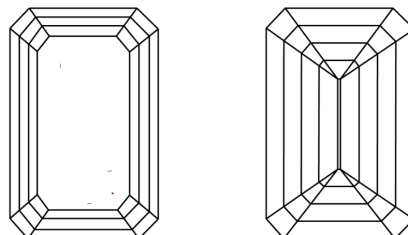
Comments: This Laboratory Grown Diamond was created by Chemical Vapor Deposition (CVD) growth process. Type IIa

PROPORTIONS



Sample Image Used

CLARITY CHARACTERISTICS



KEY TO SYMBOLS

Red symbols indicate internal characteristics.
Green symbols indicate external characteristics.

COLOR

D E F G H I J Faint Very Light Light

CLARITY

IF VS 1-2 VS 1-2 SI 1-2 I 1-3
Internally Flawless Very Very Slightly Included Very Slightly Included Slightly Included Included



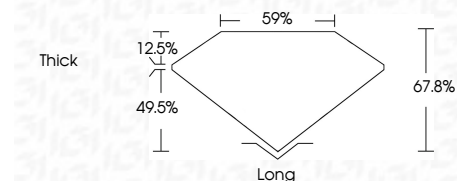
October 10, 2024
IGI Report Number LG655430664
Description LABORATORY GROWN DIAMOND
Shape and Cutting Style EMERALD CUT
Measurements 7.51 X 5.40 X 3.66 MM

GRADING RESULTS

Carat Weight 1.50 CARAT
Color Grade E
Clarity Grade VS 1

ADDITIONAL GRADING INFORMATION

Polish EXCELLENT
Symmetry EXCELLENT
Fluorescence NONE
Inscription(s) IGI LG655430664
Comments: This Laboratory Grown Diamond was created by Chemical Vapor Deposition (CVD) growth process. Type IIa



October 10, 2024
IGI Report No. LG655430664
EMERALD CUT
1.50 CARAT E
7.51 X 5.40 X 3.66 MM
Carat Weight
Color Grade
Clarity Grade VS 1
Depth 67.8%
Table 59%
Girdle Thick
Culet Long
Polish EXCELLENT
Symmetry EXCELLENT
Fluorescence NONE
Inscription(s) IGI LG655430664
Comments: This Laboratory Grown Diamond was created by Chemical Vapor Deposition (CVD) growth process. Type IIa