



# INTERNATIONAL GEMOLOGICAL INSTITUTE

Electronic COPY

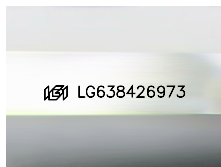
LG638426973



June 18, 2024  
 IGI Report Number LG638426973  
**PRINCESS CUT**  
**LABORATORY GROWN DIAMOND**  
 4.93 X 4.86 X 3.36 MM  
 Carat Weight **0.71 CARAT**  
 Color Grade **F**  
 Clarity Grade **VVS 2**  
 Polish **EXCELLENT**  
 Symmetry **EXCELLENT**  
 Fluorescence **NONE**  
 Inscription(s) **IGI LG638426973**

## LABORATORY GROWN DIAMOND REPORT

June 18, 2024  
 IGI Report Number **LG638426973**  
 Description **LABORATORY GROWN DIAMOND**  
 Shape and Cutting Style **PRINCESS CUT**  
 Measurements **4.93 X 4.86 X 3.36 MM**



Sample Image Used

Comments: This Laboratory Grown Diamond was created by Chemical Vapor Deposition (CVD) growth process. Type IIa

### GRADING RESULTS

Carat Weight **0.71 CARAT**  
 Color Grade **F**  
 Clarity Grade **VVS 2**

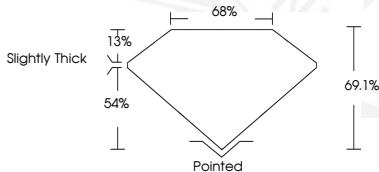
### ADDITIONAL GRADING INFORMATION

Polish **EXCELLENT**  
 Symmetry **EXCELLENT**  
 Fluorescence **NONE**  
 Inscription(s) **IGI LG638426973**

Comments: This Laboratory Grown Diamond was created by Chemical Vapor Deposition (CVD) growth process. Type IIa



June 18, 2024  
 IGI Report Number LG638426973  
**PRINCESS CUT**  
**LABORATORY GROWN DIAMOND**  
 4.93 X 4.86 X 3.36 MM  
 Carat Weight **0.71 CARAT**  
 Color Grade **F**  
 Clarity Grade **VVS 2**  
 Polish **EXCELLENT**  
 Symmetry **EXCELLENT**  
 Fluorescence **NONE**  
 Inscription(s) **IGI LG638426973**



Comments: This Laboratory Grown Diamond was created by Chemical Vapor Deposition (CVD) growth process. Type IIa

THIS DOCUMENT WAS PRODUCED WITH THE FOLLOWING SECURITY MEASURES: SPECIAL DOCUMENT PAPER, INK SCREENS, WATERMARK, BACKGROUND DESIGN, HOLOGRAM AND OTHER SECURITY FEATURES NOT LISTED AND DO EXCEED DOCUMENT SECURITY INDUSTRY GUIDELINES.

For terms & conditions and to verify this report, please visit [www.igi.org](http://www.igi.org)