



**ELECTRONIC COPY**

## LABORATORY GROWN DIAMOND REPORT

April 9, 2024	
IGI Report Number	LG629475451
Description	LABORATORY GROWN DIAMOND
Shape and Cutting Style	ROUND BRILLIANT
Measurements	7.79 - 7.81 X 4.80 MM

## GRADING RESULTS

Carat Weight	1.81 CARAT
Color Grade	G
Clarity Grade	VVS 2
Cut Grade	IDEAL

### ADDITIONAL GRADING INFORMATION

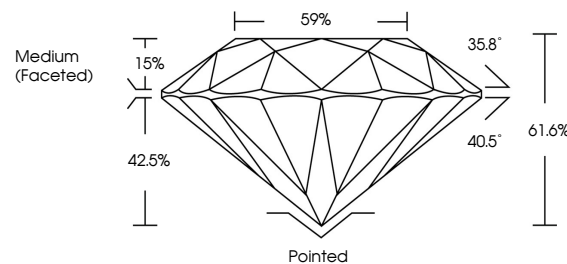
Polish	EXCELLENT
Symmetry	EXCELLENT
Fluorescence	NONE
Inscription(s)	15 LG629475451

Comments: As Grown - No indication of post-growth treatment.  
This Laboratory Grown Diamond was created by High Pressure High Temperature (HPHT) growth process.  
Type II  
Faint Blue

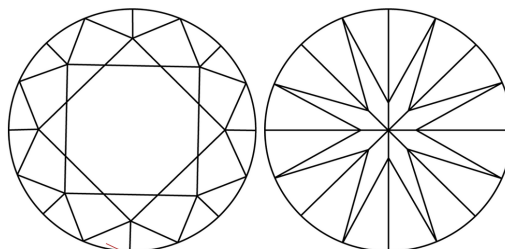
## LABORATORY GROWN DIAMOND REPORT

LG629475451  
Report verification at [igi.org](https://igi.org)

## PROPORTIONS



## CLARITY CHARACTERISTICS



### KEY TO SYMBOLS

Red symbols indicate internal characteristics.  
Green symbols indicate external characteristics.

LABORATORY GROWN  
DIAMOND REPORT

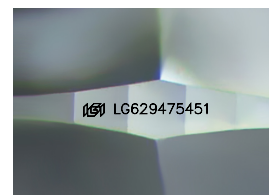
## GRADING SCALES

## CLARITY

IF	VVS <sup>1-2</sup>	VS <sup>1-2</sup>	SI <sup>1-2</sup>	I <sup>1-3</sup>
Internally Flawless	Very Very Slightly Included	Very Slightly Included	Slightly Included	Included

**COLOR**

D E F G H I J Faint Very Light Light



Sample Image Used



© IGI 2020, International Gemological Institute

FD - 10 20



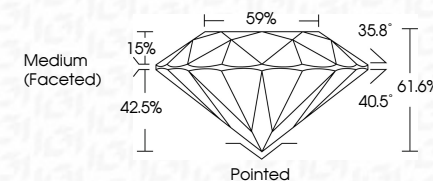
THIS DOCUMENT WAS PRODUCED WITH THE FOLLOWING SECURITY MEASURES: SPECIAL DOCUMENT PAPER, INK SCREENS, WATERMARK, BACKGROUND DESIGNS, HOLOGRAM AND OTHER SECURITY FEATURES NOT LISTED AND DO EXCEED DOCUMENT SECURITY INDUSTRY GUIDELINE

## LABORATORY GROWN DIAMOND REPORT


April 9, 2024	
IGI Report Number	LG629475451
Description	LABORATORY GROWN DIAMOND
Shape and Cutting Style	ROUND BRILLIANT
Measurements	7.79 - 7.81 X 4.80 MM

## GRADING RESULTS

Carat Weight	1.81 CARAT
Color Grade	G
Clarity Grade	VVS 2
Cut Grade	IDEAL



### ADDITIONAL GRADING INFORMATION

Polish	EXCELLENT
Symmetry	EXCELLENT
Fluorescence	NONE
Inscription(s)	 LG629475451
Comments: As Grown - No indication of post-growth treatment.	
This Laboratory Grown Diamond was created by High Pressure High Temperature (HPHT) growth process.	
Type II	
Faint Blue	



April 9, 2024	G Report No. LG529475461		ROUND BRILLIANT	
7.79 - 7.81 X 4.80 MM	1.01 CARAT		G	
Color Grade	VVS 2		IDEAL	
Clarity Grade	61.6%		59%	
Cut Grade	Medium (Faceted)		Faceted	
Depth	Excellent		Excellent	
Table	Excellent		Excellent	
Girdle	None		None	
Quet	Polished		Polished	
Polish	Symmetry		Symmetry	
Fluorescence	None		None	
Inscription(s)	169 LG529475461		169 LG529475461	
Comments:	No indication of post-growth treatment.			
	The Laboratory Grown Diamond was created by High Pressure High Temperature (HPHT) growth process.			
	Type IIa			