



ELECTRONIC COPY

LABORATORY GROWN DIAMOND REPORT

LG628472816
Report verification at igi.org

LABORATORY GROWN
DIAMOND REPORT

LABORATORY GROWN DIAMOND REPORT

LABORATORY GROWN DIAMOND REPORT

April 5, 2024
IGI Report Number **LG628472816**

Description **LABORATORY GROWN
DIAMOND**

Shape and Cutting Style **PEAR BRILLIANT**

Measurements **8.92 X 5.79 X 3.42 MM**

GRADING RESULTS

Carat Weight **1.06 CARAT**

Color Grade **H**

Clarity Grade **VS 1**

ADDITIONAL GRADING INFORMATION

Polish **VERY GOOD**

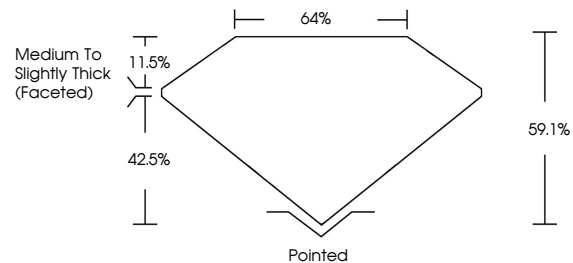
Symmetry **EXCELLENT**

Fluorescence **NONE**

Inscription(s) **IGI LG628472816**

Comments: This Laboratory Grown Diamond was created by Chemical Vapor Deposition (CVD) growth process and may include post-growth treatment. Type IIa

PROPORTIONS



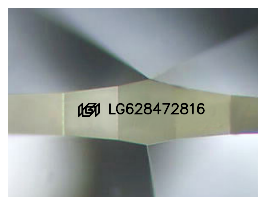
GRADING SCALES

CLARITY

IF	VVS ¹⁻²	VS ¹⁻²	SI ¹⁻²	I ¹⁻³
Internally Flawless	Very Very Slightly Included	Very Slightly Included	Slightly Included	Included

COLOR

D	E	F	G	H	I	J	Faint	Very Light	Light
---	---	---	---	---	---	---	-------	------------	-------



Sample Image Used

April 5, 2024
IGI Report Number **LG628472816**

Description **LABORATORY GROWN
DIAMOND**

Shape and Cutting Style **PEAR BRILLIANT**

Measurements **8.92 X 5.79 X 3.42 MM**

GRADING RESULTS

Carat Weight **1.06 CARAT**

Color Grade **H**

Clarity Grade **VS 1**

ADDITIONAL GRADING INFORMATION

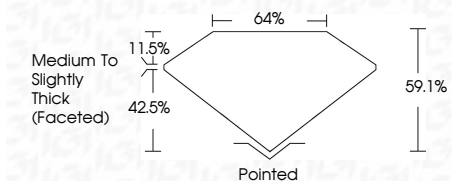
Polish **VERY GOOD**

Symmetry **EXCELLENT**

Fluorescence **NONE**

Inscription(s) **IGI LG628472816**

Comments: This Laboratory Grown Diamond was created by Chemical Vapor Deposition (CVD) growth process and may include post-growth treatment. Type IIa



IGI

April 5, 2024
IGI Report No. **LG628472816**
PEAR BRILLIANT
8.92 X 5.79 X 3.42 MM
Carat Weight **1.06 CARAT**
Color Grade **H**
Clarity Grade **VS 1**
Table **64%**
Girdle **Medium to Slightly Thick (Faceted)**
Culet **Pointed**
Polish **VERY GOOD**
Symmetry **EXCELLENT**
Fluorescence **NONE**
Inscription(s) **IGI LG628472816**
Comments: This Laboratory Grown Diamond was created by Chemical Vapor Deposition (CVD) growth process and may include post-growth treatment. Type IIa