



**ELECTRONIC COPY**

## LABORATORY GROWN DIAMOND REPORT

|                         |                             |
|-------------------------|-----------------------------|
| April 10, 2024          |                             |
| IGI Report Number       | LG628425013                 |
| Description             | LABORATORY GROWN<br>DIAMOND |
| Shape and Cutting Style | EMERALD CUT                 |
| Measurements            | 7.52 X 5.23 X 3.57 MM       |

## GRADING RESULTS

|               |            |
|---------------|------------|
| Carat Weight  | 1.36 CARAT |
| Color Grade   | E          |
| Clarity Grade | VVS 2      |

### ADDITIONAL GRADING INFORMATION

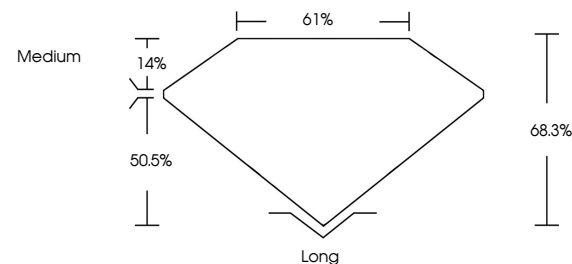
|                |   |
|----------------|---|
| Polish         | EXCELLENT   |
| Symmetry       | EXCELLENT   |
| Fluorescence   | NONE  |
| Inscription(s) |  LG628425013 |

Comments: This Laboratory Grown Diamond was created by Chemical Vapor Deposition (CVD) growth process and may include post-growth treatment.  
Type IIa

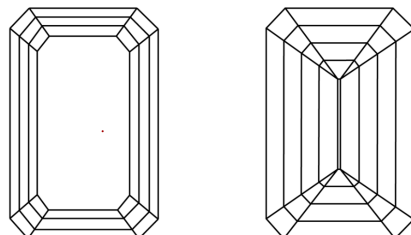
## LABORATORY GROWN DIAMOND REPORT

LG628425013  
Report verification at [igi.org](https://www.igi.org)

## PROPORTIONS



## CLARITY CHARACTERISTICS



## KEY TO SYMBOLS

Red symbols indicate internal characteristics.  
Green symbols indicate external characteristics.

LABORATORY GROWN  
DIAMOND REPORT

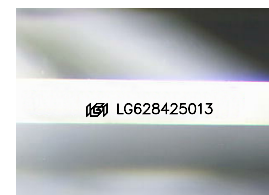
## GRADING SCALES

## CLARITY

| IF                     | VVS <sup>1-2</sup>             | VS <sup>1-2</sup>         | SI <sup>1-2</sup>    | I <sup>1-3</sup> |
|------------------------|--------------------------------|---------------------------|----------------------|------------------|
| Internally<br>Flawless | Very Very<br>Slightly Included | Very<br>Slightly Included | Slightly<br>Included | Included         |

**COLOR**

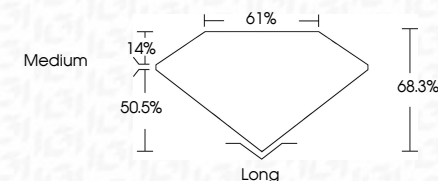
D E F G H I J Faint Very Light Light



Sample Image Used



|                         |                             |
|-------------------------|-----------------------------|
| April 10, 2024          |                             |
| IGI Report Number       | LG628425013                 |
| Description             | LABORATORY GROWN<br>DIAMOND |
| Shape and Cutting Style | EMERALD CUT                 |
| Measurements            | 7.52 X 5.23 X 3.57 MM       |
| <b>GRADING RESULTS</b>  |                             |
| Carat Weight            | 1.36 CARAT                  |
| Color Grade             | E                           |
| Clarity Grade           | VVS 2                       |



### ADDITIONAL GRADING INFORMATION

|                |                  |
|----------------|------------------|
| Polish         | EXCELLENT        |
| Symmetry       | EXCELLENT        |
| Fluorescence   | NONE             |
| Inscription(s) | (15) LG628425013 |

Comments: This Laboratory Grown Diamond was created by Chemical Vapor Deposition (CVD) growth process and may include post-growth treatment.  
Type IIa



© IGI 2020, International Gemological Institute

FD - 10 20



THIS DOCUMENT WAS PRODUCED WITH THE FOLLOWING SECURITY MEASURES: SPECIAL DOCUMENT PAPER, INK SCREENS, WATERMARK, BACKGROUND DESIGNS, HOLOGRAM AND OTHER SECURITY FEATURES NOT LISTED AND DO EXCEED DOCUMENT SECURITY INDUSTRY GUIDELINES

**www.igi.org**

April 10, 2024  
GI Report No LG628425013

|               |                       |            |
|---------------|-----------------------|------------|
| EMERALD CUT   | 1.52 X 5.23 X 3.57 MM | 1.36 CARAT |
| Carat Weight  |                       | E          |
| Color Grade   |                       | VVS 2      |
| Clarity Grade |                       | 68.3%      |
| Depth         |                       | 61%        |
| Table         |                       | Medium     |
| Grade         |                       | Long       |
| Culet         |                       | EXCELLENT  |
| Polish        |                       | EXCELLENT  |
| Symmetry      |                       | NONE       |
| Fluorescence  |                       |            |

**Comments:**  
This Laboratory Grown Diamond was created by Chemical Vapor Deposition (CVD) growth process and may include post-growth treatment.