



**INTERNATIONAL  
GEMOLOGICAL  
INSTITUTE**

**ELECTRONIC COPY**

**LABORATORY GROWN  
DIAMOND REPORT**

**LG627453245**

**IGI LABORATORY GROWN  
DIAMOND ID REPORT**

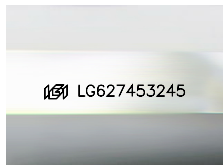
April 5, 2024  
IGI Report Number **LG627453245**  
**PRINCESS CUT**  
**4.43 X 4.38 X 3.18 MM**  
Carat Weight 0.55 CARAT  
Color Grade D  
Clarity Grade VVS 2  
Polish EXCELLENT  
Symmetry EXCELLENT  
Fluorescence NONE  
Inscription(s) LG627453245

Comments: As Grown - No indication of post-growth treatment. This Laboratory Grown Diamond was created by High Pressure High Temperature (HPHT) growth process. Type II

**LABORATORY GROWN DIAMOND REPORT**

**IGI LABORATORY GROWN DIAMOND IDENTIFICATION REPORT**

April 5, 2024  
IGI Report Number LG627453245  
Description LABORATORY GROWN DIAMOND  
Shape and Cutting Style PRINCESS CUT  
Measurements 4.43 X 4.38 X 3.18 MM



Sample Image Used

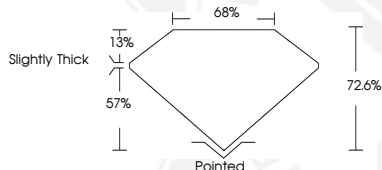
**GRADING RESULTS**

Carat Weight 0.55 CARAT  
Color Grade D  
Clarity Grade VVS 2

**ADDITIONAL GRADING INFORMATION**

Polish EXCELLENT  
Symmetry EXCELLENT  
Fluorescence NONE  
Inscription(s) LG627453245

Comments: As Grown - No indication of post-growth treatment. This Laboratory Grown Diamond was created by High Pressure High Temperature (HPHT) growth process. Type II



**IGI LABORATORY GROWN  
DIAMOND ID REPORT**

April 5, 2024  
IGI Report Number **LG627453245**  
**PRINCESS CUT**  
**4.43 X 4.38 X 3.18 MM**  
Carat Weight 0.55 CARAT  
Color Grade D  
Clarity Grade VVS 2  
Polish EXCELLENT  
Symmetry EXCELLENT  
Fluorescence NONE  
Inscription(s) LG627453245

Comments: As Grown - No indication of post-growth treatment. This Laboratory Grown Diamond was created by High Pressure High Temperature (HPHT) growth process. Type II



THIS DOCUMENT WAS PRODUCED WITH THE FOLLOWING SECURITY MEASURES: SPECIAL DOCUMENT PAPER, INK SCREENS, WATERMARK, BACKGROUND DESIGN, HOLOGRAM AND OTHER SECURITY FEATURES NOT LISTED AND DO EXCEED DOCUMENT SECURITY INDUSTRY GUIDELINES.

For terms & conditions and to verify this report, please visit [www.igi.org](http://www.igi.org)