



ELECTRONIC COPY

LABORATORY GROWN DIAMOND REPORT

February 13, 2024
 IGI Report Number **LG621479527**
 Description **LABORATORY GROWN
DIAMOND**
 Shape and Cutting Style **ROUND BRILLIANT**
 Measurements **9.63 - 9.69 X 5.93 MM**

GRADING RESULTS

Carat Weight **3.50 CARATS**
 Color Grade **I**
 Clarity Grade **VVS 2**
 Cut Grade **EXCELLENT**

ADDITIONAL GRADING INFORMATION

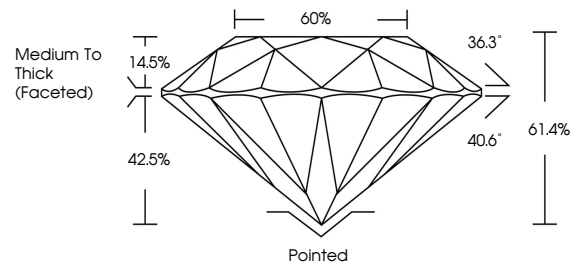
Polish **EXCELLENT**
 Symmetry **EXCELLENT**
 Fluorescence **NONE**
 Inscription(s) **IGI LG621479527**

Comments: This Laboratory Grown Diamond was created by Chemical Vapor Deposition (CVD) growth process and may include post-growth treatment. Type IIa

LG621479527

Report verification at igi.org

PROPORTIONS



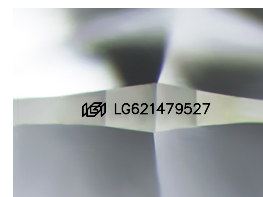
GRADING SCALES

CLARITY

IF	VVS ¹⁻²	VS ¹⁻²	SI ¹⁻²	I ¹⁻³
Internally Flawless	Very Very Slightly Included	Very Slightly Included	Slightly Included	Included

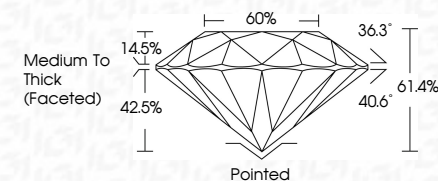
COLOR

D	E	F	G	H	I	J	Faint	Very Light	Light
---	---	---	---	---	---	---	-------	------------	-------



Sample Image Used

February 13, 2024
 IGI Report Number **LG621479527**
 Description **LABORATORY GROWN
DIAMOND**
 Shape and Cutting Style **ROUND BRILLIANT**
 Measurements **9.63 - 9.69 X 5.93 MM**
GRADING RESULTS
 Carat Weight **3.50 CARATS**
 Color Grade **I**
 Clarity Grade **VVS 2**
 Cut Grade **EXCELLENT**



ADDITIONAL GRADING INFORMATION

Polish **EXCELLENT**
 Symmetry **EXCELLENT**
 Fluorescence **NONE**
 Inscription(s) **IGI LG621479527**
 Comments: This Laboratory Grown Diamond was created by Chemical Vapor Deposition (CVD) growth process and may include post-growth treatment. Type IIa



IGI



February 13, 2024	IGI Report No LG621479527	ROUND BRILLIANT	3.50 CARATS	I	VVS 2	EXCELLENT	61.4%	60%	Medium To Thick (Faceted)	Pointed	EXCELLENT	EXCELLENT	NONE	IGI LG621479527
9.63 - 9.69 X 5.93 MM	Carat Weight	Color Grade	Clarity Grade	Cut Grade	Depth	Table	Girdle	Culet	Polish	Symmetry	Fluorescence	Inscription(s)	Comments: This Laboratory Grown Diamond was created by Chemical Vapor Deposition (CVD) growth process and may include post-growth treatment. Type IIa	