



ELECTRONIC COPY

LABORATORY GROWN DIAMOND REPORT

LG604385730

Report verification at igi.org

LABORATORY GROWN
DIAMOND REPORT

LABORATORY GROWN DIAMOND REPORT

LABORATORY GROWN DIAMOND REPORT

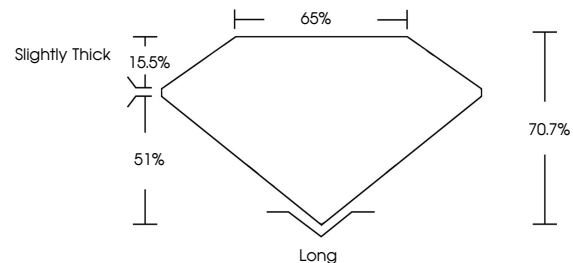
October 16, 2023
 IGI Report Number **LG604385730**
 Description **LABORATORY GROWN
DIAMOND**
 Shape and Cutting Style **EMERALD CUT**
 Measurements **8.63 X 6.15 X 4.35 MM**
GRADING RESULTS
 Carat Weight **2.27 CARATS**
 Color Grade **G**
 Clarity Grade **VVS 2**

ADDITIONAL GRADING INFORMATION

Polish **VERY GOOD**
 Symmetry **EXCELLENT**
 Fluorescence **NONE**
 Inscription(s) **IGI LG604385730**

Comments: This Laboratory Grown Diamond was created by Chemical Vapor Deposition (CVD) growth process and may include post-growth treatment. Type IIa

PROPORTIONS



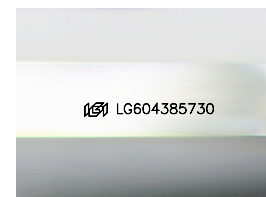
GRADING SCALES

CLARITY

IF	VVS ¹⁻²	VS ¹⁻²	SI ¹⁻²	I ¹⁻³
Internally Flawless	Very Very Slightly Included	Very Slightly Included	Slightly Included	Included

COLOR

D	E	F	G	H	I	J	Faint	Very Light	Light
---	---	---	---	---	---	---	-------	------------	-------

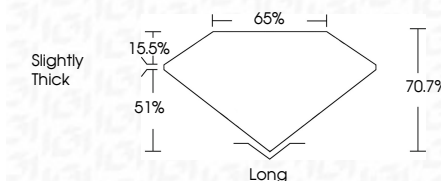


Sample Image Used

October 16, 2023
 IGI Report Number **LG604385730**
 Description **LABORATORY GROWN
DIAMOND**
 Shape and Cutting Style **EMERALD CUT**
 Measurements **8.63 X 6.15 X 4.35 MM**
GRADING RESULTS
 Carat Weight **2.27 CARATS**
 Color Grade **G**
 Clarity Grade **VVS 2**

ADDITIONAL GRADING INFORMATION

Polish **VERY GOOD**
 Symmetry **EXCELLENT**
 Fluorescence **NONE**
 Inscription(s) **IGI LG604385730**
 Comments: This Laboratory Grown Diamond was created by Chemical Vapor Deposition (CVD) growth process and may include post-growth treatment. Type IIa



IGI

October 16, 2023
 IGI Report No. **LG604385730**
EMERALD CUT
8.63 X 6.15 X 4.35 MM
 Carat Weight **2.27 CARATS**
 Color Grade **G**
 Clarity Grade **VVS 2**
 Table **70.7%**
 Girdle **65%**
 Culet **Slightly Thick**
 Polish **Long**
 Symmetry **VERY GOOD**
 Fluorescence **EXCELLENT**
 Inscription(s) **NONE**
 IGI LG604385730

Comments: This Laboratory Grown Diamond was created by Chemical Vapor Deposition (CVD) growth process and may include post-growth treatment. Type IIa